

Technical data

Pump name LPS 25/15 M

Customer	Date 19-May-2020	Company
Contact	Item no.	Issued by
Phone	Project	Phone
E-mail	Project ID	E-mail

Requested data

1	Pump type	IN LINE CENTRIFUGAL PUMPS	Fluid	Water, clean
2	Number of pumps / Reserve	1 / 0	Liquid temperature	K 293
3	Flow l/min	0	Kin. viscosity	mm ² /s 1
4	Head m	0	Vapour pressure	kPa 2.2
5	Geodetic head m	0	PH value	7
6	Inlet pressure (pin) kPa	10	Density	kg/m ³ 1000
7	Available system NPSH	0	Solids	Weight % 0
8	Ambient temperature K	290		

Pump

9	Pump name	LPS 25/15 M	Frequency	Hz 50
10	Design	IN LINE CENTRIFUGAL PUMPS	Installation type	STANDARD
11	Manufacturer	EPE	Impeller Diameter	Max. mm 98
12	Speed 1/min	2800		Designed mm 98
13	No. of Stage	1		Min. mm 98
14	Connection Suction side		Flow	Operating l/min
15	Connection Discharge side			Max- l/min 70
16	Max Working Pressure kPa	1000		Min- l/min 20
17	Shut-off head kPa	100.68	Head	Operating m
18	Total weight kg	See the table of "Dimensions".		- (Qmax.) m 4.9
19	Shaft power kW			- (Qmin.) m 9.3
20			Max. Shaft Power at max. impeller	kW 0.16
21	Required pump NPSH m		Efficiency	%

Materials

22	Impeller	AISI 304	
23	Casing	AISI 304	
24	Shaft	AISI 303 (wet extension)	
25			
26			
27			

Motor

28	Manufacturer	EPE Standard	Insulation class	F
29	Type	TEFC_LPS 25/15 M_230_Single Phase	Phases	1~
30	Specific design	- / 50 Hz / Pole pairs 1	Frame size	
31	Rated power kW	0.15	Weight	kg 0
32	Number of poles	2	Electric voltage	V 230
33	Speed 1/min	2800	Electric current	A 1.67
34	Degree of protection	IP 55		
35				

Remarks

Performance curve Pump name LPS 25/15 M

Customer	Date 19-May-2020	Company
Contact	Item no.	Issued by
Phone	Project	Phone
E-mail	Project ID	E-mail

Requested data

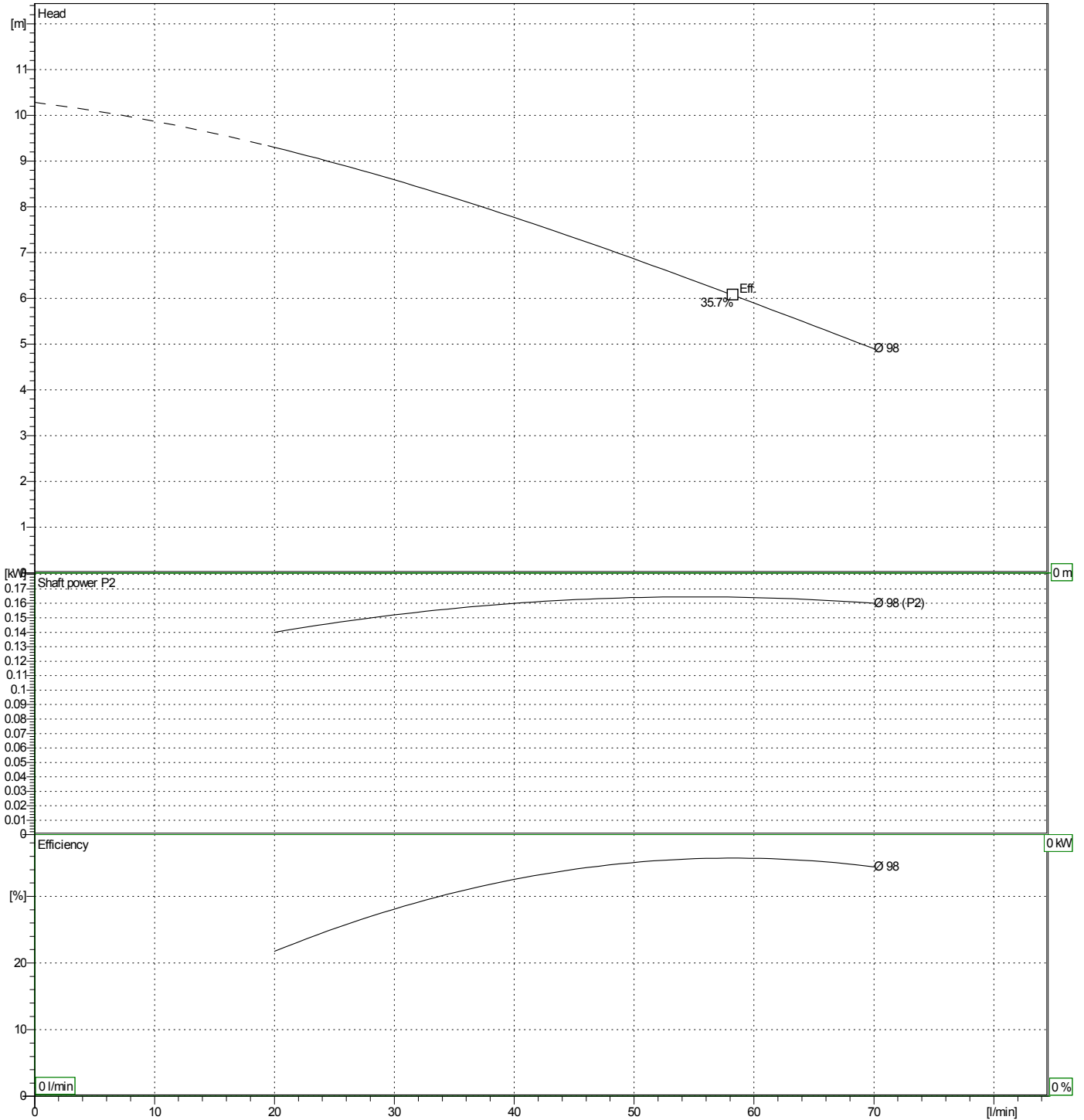
1	Flow	l/min	0
2	Head	m	0
3	Geodetic head	m	0

Pump

Operating Flow	l/min	Frequency	Hz	50
Operating Head	m	Number of poles	2	
Impeller Diameter	Designed mm	98	Speed	1/min

Test standard: ISO 9906:2012 - Grade3B

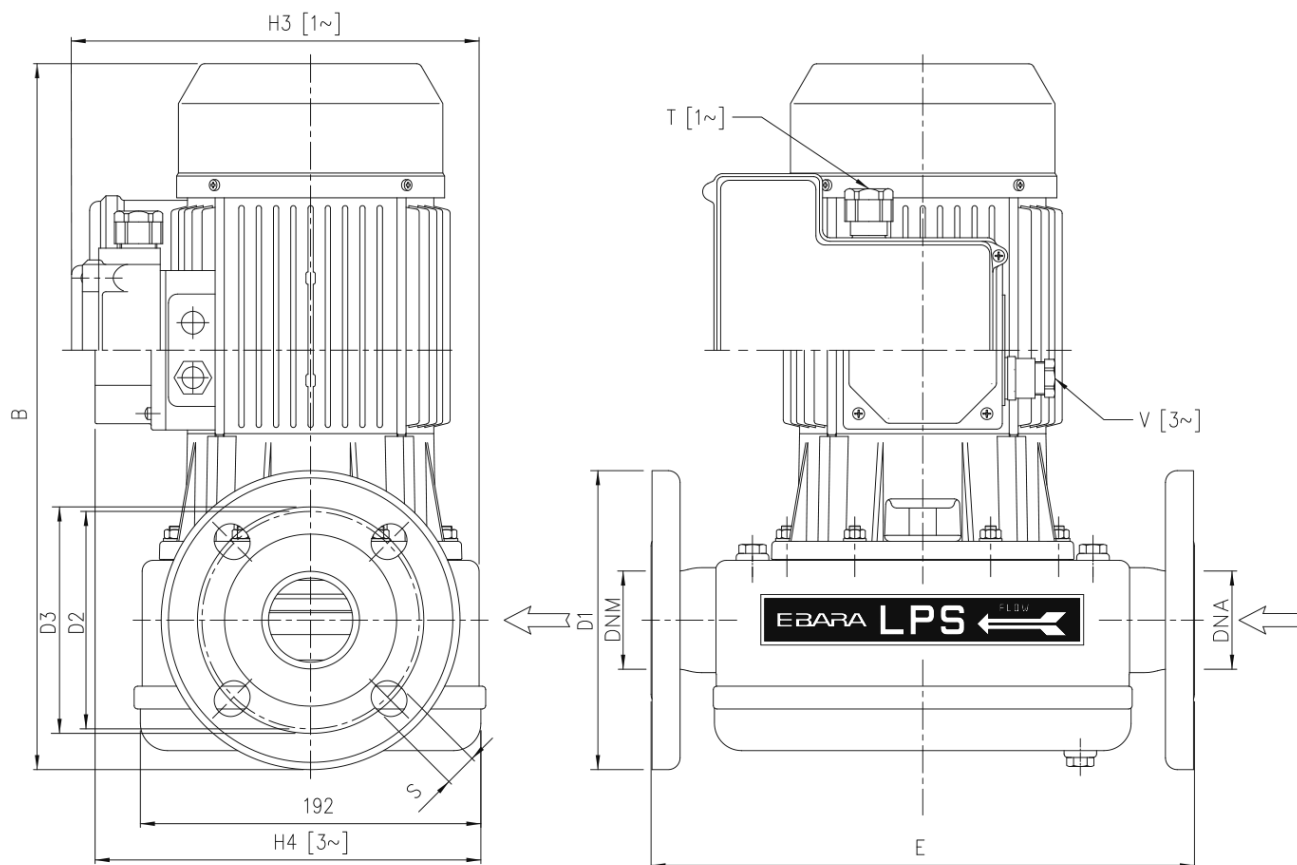
Water, clean [100%] ; 293K; 998.3kg/m³; 1mm²/s



Dimensions

Pump name LPS 25/15 M

Customer	Date 19-May-2020	Company
Contact	Item no.	Issued by
Phone	Project	Phone
E-mail	Project ID	E-mail

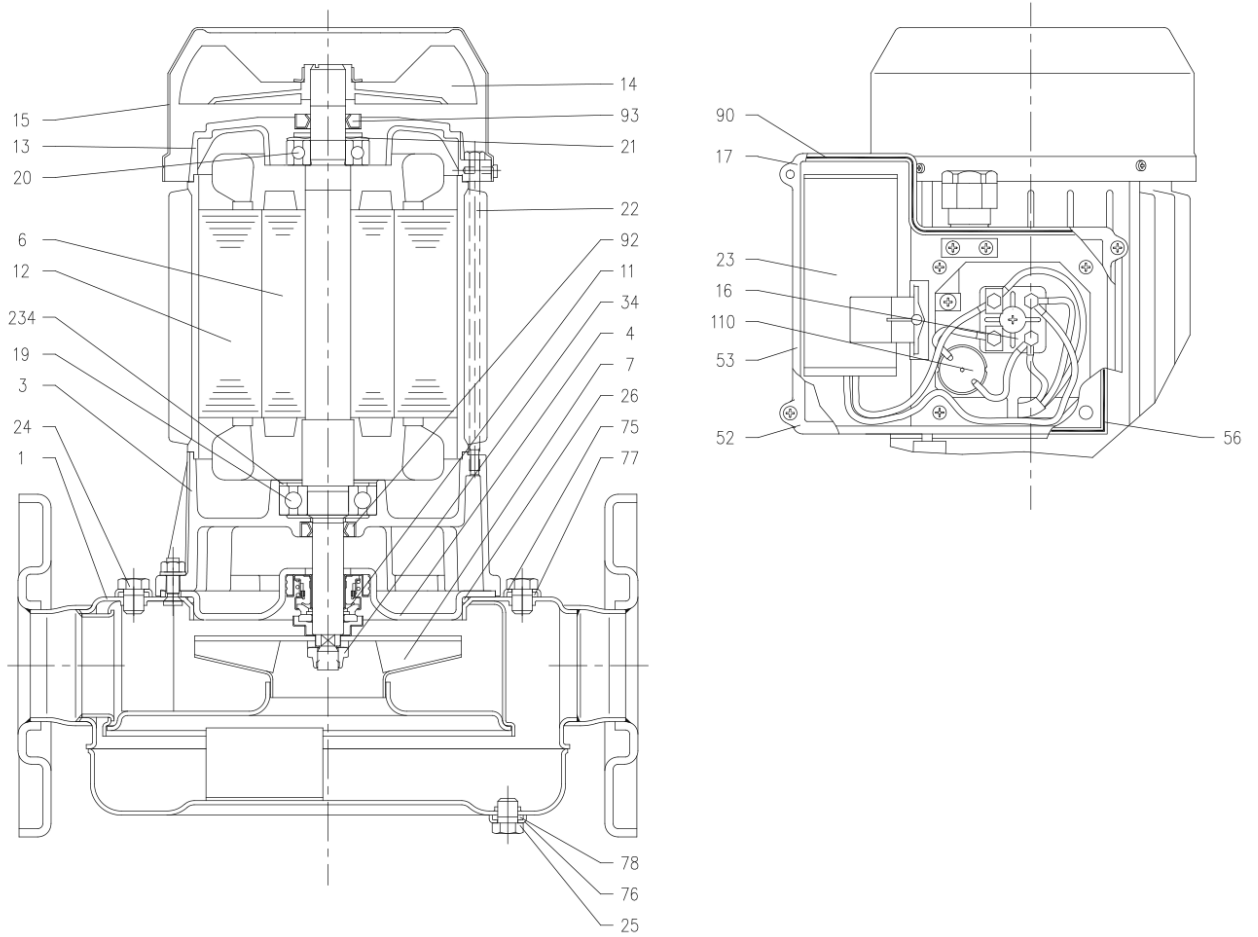


Dimensions in		mm						
1	B	322						
2	D1	115						
3	D2	85						
4	D3	85						
5	DNA	25						
6	DNM	25						
7	E	300						
8	H3	206						
9	S	14						
10	T	PG 11						
11	Weight P&M	10 kg						

(1/3) Construction

Pump name LPS 25/15 M

Customer	Date 19-May-2020	Company
Contact	Item no.	Issued by
Phone	Project	Phone
E-mail	Project ID	E-mail



(2/3)

Construction

Pump name LPS 25/15 M

Customer	Date 19-May-2020	Company
Contact	Item no.	Issued by
Phone	Project	Phone
E-mail	Project ID	E-mail

N°	PART NAME	MATERIAL	DIMENSION	STANDARD
1	Casing	AISI 304		
3	Motor bracket	Aluminium		
4	Casing cover	AISI 304		
6	Shaft w ith rotor	AISI 303 (Wet extension)		
7	Impeller	AISI 304		
11	Mechanical seal [4]	Carbon/Ceramic/NBRH		
12	Motor frame w ith stator	-		
13	Motor cover	Aluminium		
14	Fan	PA		
15	Fan cover	Fe P04 Galvanized		
16	Terminal board	-		
17	Terminal box cover [2]	Aluminium		
19	Pump side ball bearing	-		
20	Fan side ball bearing	-		
21	Adjusting ring	Steel C70		
22	Tie rod	Fe 420 Galvanized		
23	Capacitor [1]	-		
24	Priming plug	AISI 304	1/8" G	ISO 228/2
25	Drain plug	AISI 304	1/8" G	ISO 228/2
26	O-ring	NBR		
34	Impeller nut	AISI 304	M10x1.25	UNI 7474
52	Capacitor box [1]	ABS class V-0		
53	Capacitor box cover [1]	ABS class V-0		
56	Box gasket	NBR		
75	Washer	AISI 304		
76	Washer	AISI 304		
77	O-ring	NBR		
78	O-ring	NBR		
90	Terminal box cover gasket	NBR		
92	Lip seal	NBR		
93	Lip seal	NBR		
110	Protector [3]	-		
234	Seeger ring	Carbon steel		

[1] Only for single phase

[2] Only for three phase

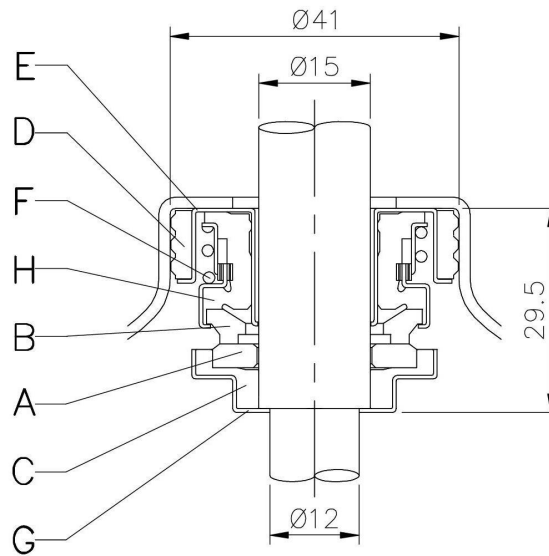
[3] Only for version single phase: LPS 50/150M

[4] See **CONSTRUCTION 3**

(3/3) Construction

Pump name LPS 25/15 M

Customer	Date 19-May-2020	Company
Contact	Item no.	Issued by
Phone	Project	Phone
E-mail	Project ID	E-mail



REF	PART NAME	MATERIAL
A	Rotary seal ring	ceramic
B	Stationary seal ring	carbon graphite
C	Cup Gasket	NBRH
D	Seal ring	NBRH
E	Case	AISI304
F	Self-driving spring	AISI304
G	Case	AISI304
H	Bellows	NBRH