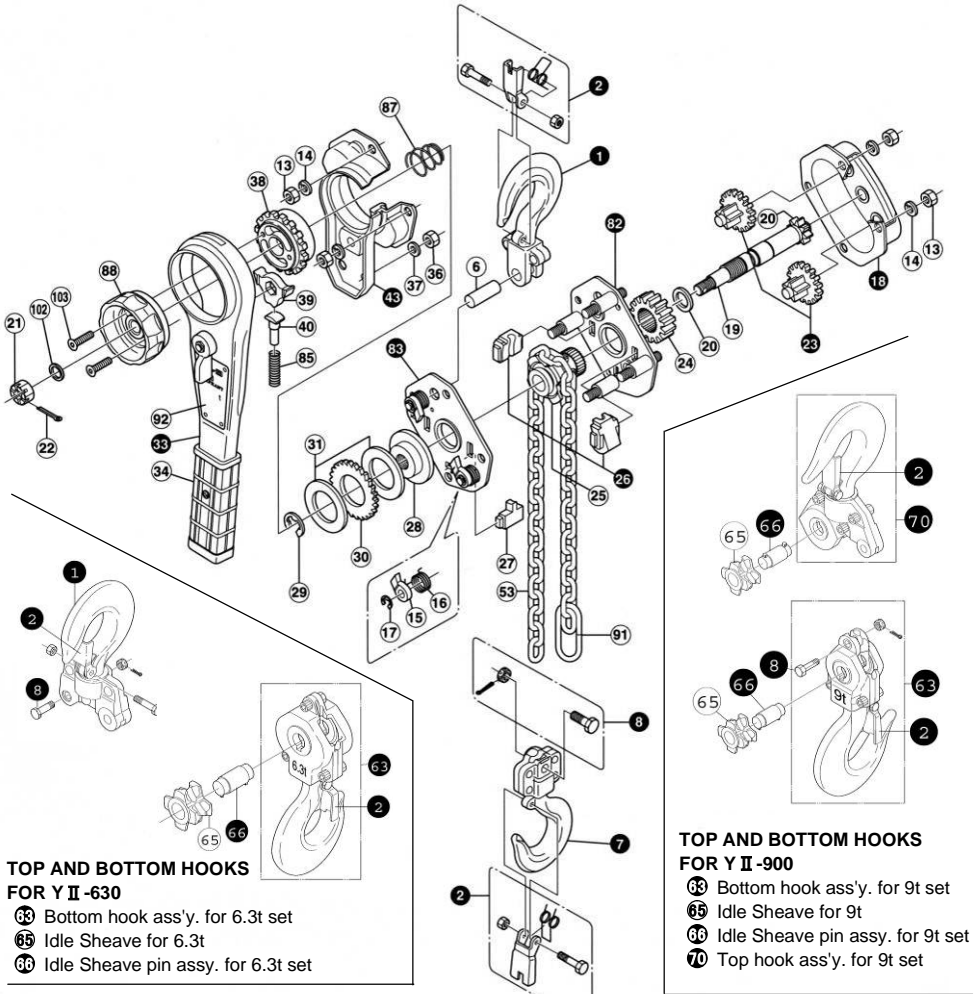


# DETAIL DRAWING : YA-80.100.160.320.630.900



## TOP AND BOTTOM HOOKS FOR Y II -630

- 33 Bottom hook ass'y. for 6.3t set
- 85 Idle Sheave for 6.3t
- 36 Idle Sheave pin assy. for 6.3t set

## TOP AND BOTTOM HOOKS FOR Y II -900

- 33 Bottom hook ass'y. for 9t set
- 15 Idle Sheave for 9t
- 66 Idle Sheave pin assy. for 9t set
- 70 Top hook ass'y. for 9t set

## Y II -80.100.160.320.630.900

- |  |   |   |
|--|---|---|
| <ul style="list-style-type: none"> <li>1 Top hook ass'y set</li> <li>2 Safety latch set</li> <li>8 Top hook pin</li> <li>7 Bottom hook ass'y set</li> <li>8 Chain stop bolt set</li> <li>13 Hex. nut</li> <li>14 Spring washer</li> <li>15 Pawl</li> <li>16 Pawl spring</li> <li>17 E-ring for pawl</li> <li>18 Gear cover ass'y set</li> <li>19 Pinion shaft</li> <li>20 Washer for pinion shaft</li> <li>21 Hex. castle nut</li> </ul> | <ul style="list-style-type: none"> <li>22 Cotter pin</li> <li>23 2nd and 3rd gear ass'y set</li> <li>24 Load gear</li> <li>25 Load sheave</li> <li>26 Chain guide ass'y set</li> <li>27 Chain stripper</li> <li>28 Disc hub</li> <li>29 E-ring for disc hub</li> <li>30 Ratchet wheel</li> <li>31 Brake lining</li> <li>32 Lever ass'y set</li> <li>34 Lever grip set</li> <li>36 Hex. nut</li> <li>37 Spring washer</li> </ul> | <ul style="list-style-type: none"> <li>38 Feed gear</li> <li>39 Ratchet for feed gear</li> <li>40 Ratchet spring pin</li> <li>43 Lever cover set</li> <li>53 Load chain set</li> <li>62 Gear-side plate ass'y set</li> <li>63 Lever-side plate ass'y set</li> <li>65 Ratchet spring</li> <li>67 Spring for floating mechanism</li> <li>68 Feed handle</li> <li>69 Chain stopper</li> <li>92 Name plate</li> <li>102 Check Washer</li> <li>103 Countersunk bolt</li> </ul> |
|--|---|---|