

## CWG-10077, CWG-30075

300 kg



## Electric Winch

110V, 220V-240V x 1ph AC (CWG-10077)  
380V-440V x 3ph AC (CWG-30075)

- Positive retention of wire rope on the drum
- Electromagnetic spring-applied failsafe brake
- Heavy duty high efficiency ball bearings on all running surfaces
- Planetary gears for maximum mechanical efficiency
- Enclosed drum flanges to prevent rope becoming trapped between drum and support steel plates
- Quiet running
- Emergency stop function switch is available upon request
- Low voltage control ass'y is available upon request

### SPECIFICATIONS

MODEL	CWG-10077	CWG-30075
Lifting capacity kg wire rope top layer	300	
Lifting speed, m/min	12	10
type	Induction	
Motor rating IP44	1.5 x 4	-
output, kw x poles	1ph, 110V 1ph, 220-240V 3ph, 380-440V	0.75 x 4
Gear ratio	41:1	43:1
Maximum lifting height, m	58	29
Braking methods	Electromagnetic	
Wire rope w/ hook	size, mm x m * 6 x 60 7 x 40	* 6 x 30
construction	6 x 19	
breaking strength, kg	2,010	2,010
weight hook	CHW-0031	
Drum dimension, mm	length 150	110
drum dia.	102	94
flange dia.	180	154
Mounting bolts pattern, mm x mm	197 x 156	142 x 142
Standard accessory	weight hook	*
	remote control	*
Net weight, kg (standard version)	42	32
Gross weight, kg	44	34
Body dimension, mm (L x D x H)	624 x 252 x 300	477 x 210 x 241
Box dimension, mm (L x D x H)	700 x 280 x 375	635 x 296 x 290

Note: 1. Above performance ratings are based on 50Hz supply.  
(60Hz motor available as option resulting in a reduction of lifting capacities by 20% and a speed increase of 20%)  
2. \*\*\* Means standard version

### SOLUTION for REMOTE CONTROL

- 1). \*Remote control, HOB-213
  - Switch cord 3.5 mm<sup>2</sup> x 5C x 3 m for CWG-10077
  - Switch cord 1.25 mm<sup>2</sup> x 5C x 3 m for CWG-30075
  - Pendant switch HOB-213
- 2). Remote control, PB-331
  - Switch cord 3.5 mm<sup>2</sup> x 5C x 3 m for CWG-10077
  - Switch cord 1.25 mm<sup>2</sup> x 5C x 3 m for CWG-30075
  - Pendant switch PB-331 w/an emergency stop button
- 3). Low voltage control ass'y LV-320
  - Remote control, PB-306
  - Switch cord 1.25 mm<sup>2</sup> x 3C x 3 m
  - Pendant switch PB-306 w/an emergency stop button
  - Low voltage control, LV-320

### PERFORMANCE DATA

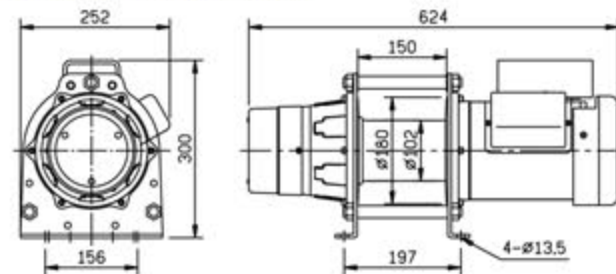
MODEL	Level Surface	Gradient % inclines / angle in degrees				
		10%6°	20%11°	40%22°	60%31°	80%39°
CWG-10077	2,500	1,340	970	620	490	410
CWG-30075	2,500	1,340	970	620	490	410

1. All rating are based on the top layer. For each layer reduction on the drum pulling capacity is increased by 10%
2. Use a snatch block for double line operation, to increase line pull by approximately 85%
3. The pulling capacities are based on a pulling load and 15% has been allowed for friction (specific applications will vary)

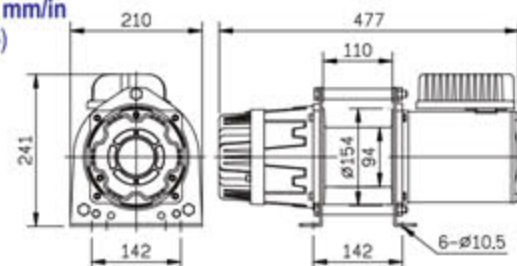
Layer of Wire Rope	Lifting Capacity kg		Lifting Speed m/min		Total Rope on the Drum, m	
	CWG-10077	CWG-30075	CWG-10077	CWG-30075	CWG-10077	CWG-30075
1 <sup>st</sup>	467	444	12	10	8.1	5.4
2 <sup>nd</sup>	420	396	13.5	11.4	17.2	11.5
3 <sup>rd</sup>	382	358	14.9	12.5	27.1	18.3
4 <sup>th</sup>	350	326	16.2	13.8	38	25.7
5 <sup>th</sup>	323	300	17.6	15	50	30
6 <sup>th</sup>	300	-	19	-	60	-

Note: Above performance ratings are based on 50Hz supply.

### DIMENSION mm/in (CWG-10077)



### DIMENSION mm/in (CWG-30075)



## CWG-10151, CWG-30151

400-500 kg



## Electric Winch

220V-240V x 1ph AC (CWG-10151)  
380V-440V x 3ph AC (CWG-30151)

- Electromagnetic spring-applied failsafe brake
- Heavy duty high efficiency ball bearings on all running surfaces
- Planetary gears for maximum mechanical efficiency
- Enclosed drum flanges to prevent rope becoming trapped between drum and support castings
- Cast steel foot mountings
- Fabricated steel drum
- Supplied on steel base plate ready to mount
- Quiet running
- Emergency stop function switch is available upon request
- Low voltage control ass'y is available upon request

### SPECIFICATIONS

MODEL	CWG-10151	CWG-30151
Lifting capacity kg wire rope top layer	400	500
Lifting speed, m/min	12	18
type	Induction	
Motor rating IP44	1.5 x 4	-
output, kw x poles	1ph, 220-240V 3ph, 380-440V	1.5 x 4
Gear ratio	57:1	
Maximum lifting height, m	58	
Braking methods	Electromagnetic	
Wire rope w/ hook	size, mm x m * 9 x 60 8 x 100	
construction	6 x 24	
breaking strength, kg	3,750	2,970
weight hook	CHW-0005	
Drum dimension, mm	length 240	
drum dia.	140	
flange dia.	280	
Mounting bolts pattern, mm x mm	400 x 325	
Standard accessory	weight hook	*
	remote control	*
	base plate	*
Net weight, kg (standard version)	125	
Gross weight, kg	150	
Body dimension, mm (L x D x H)	937 x 367 x 425	922 x 367 x 425
Box dimension, mm (L x D x H)	1,090 x 470 x 590	

Note: 1. Above performance ratings are based on 50Hz supply.  
(60Hz motor available as option resulting in a reduction of lifting capacities by 20% and a speed increase of 20%)  
2. \*\*\* Means standard version

### SOLUTION for REMOTE CONTROL

- 1). \*Remote control, HOB-213
  - Switch cord 3.5 mm<sup>2</sup> x 5C x 3 m for CWG-10151
  - Switch cord 2.0 mm<sup>2</sup> x 5C x 3 m for CWG-30151
  - Pendant switch HOB-213
- 2). Remote control, PB-331
  - Switch cord 3.5 mm<sup>2</sup> x 5C x 3 m for CWG-10151
  - Switch cord 2.0 mm<sup>2</sup> x 5C x 3 m for CWG-30151
  - Pendant switch PB-331 w/an emergency stop button
- 3). Low voltage control ass'y LV-320
  - Remote control, PB-306
  - Switch cord 1.25 mm<sup>2</sup> x 3C x 3 m
  - Pendant switch PB-306 w/an emergency stop button
  - Low voltage control, LV-320

### PERFORMANCE DATA

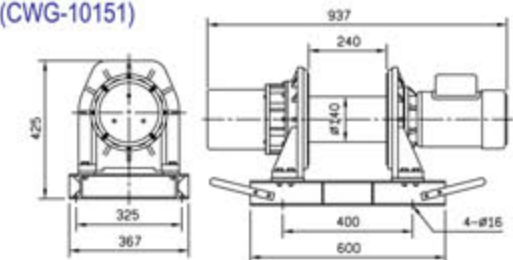
MODEL	Level Surface	Gradient % inclines / angle in degrees				
		10%6°	20%11°	40%22°	60%31°	80%39°
CWG-10151	3,330	1,790	1,300	830	650	550
CWG-30151	4,170	2,230	1,620	1,040	810	690

1. All rating are based on the top layer. For each layer reduction on the drum pulling capacity is increased by 10%
2. Use a snatch block for double line operation, to increase line pull by approximately 85%
3. The pulling capacities are based on a pulling load and 15% has been allowed for friction (specific applications will vary)

Layer of Wire Rope	Lifting Capacity kg		Lifting Speed m/min	Total Rope on the Drum, m
	CWG-10151	CWG-30151	CWG-10151 / 30151	
1 <sup>st</sup>	593	742	12	12
2 <sup>nd</sup>	529	662	13.3	26
3 <sup>rd</sup>	478	597	14.8	40
4 <sup>th</sup>	436	544	16.2	57
5 <sup>th</sup>	400	500	18	60

Note: Above performance ratings are based on 50Hz supply.

### DIMENSION mm/in (CWG-10151)



### DIMENSION mm/in (CWG-30151)

